

BarCode Traders Inc.

Copyright © 2011 BarCode Trader Inc. 800 Fifth Ave Ste 101-106 Seattle, WA 98104

BCT SCAN KIT v2.0

Call us Toll free 800 656-2062

International 509 888-0135

Support: service@barcodetraders.com

Sales: sales@barcodetraders.com

Worldwide sales and support: www.barcodetraders.com

Setup!

Plug in the dock to AC power (110v), run the cord into the back of the dock, and plug in the USB cable to ANY usb port.



Charge it!

Dock the Intermec CN1 computer and let it charge for a while, overnight is GREAT but an hour or two is fine!

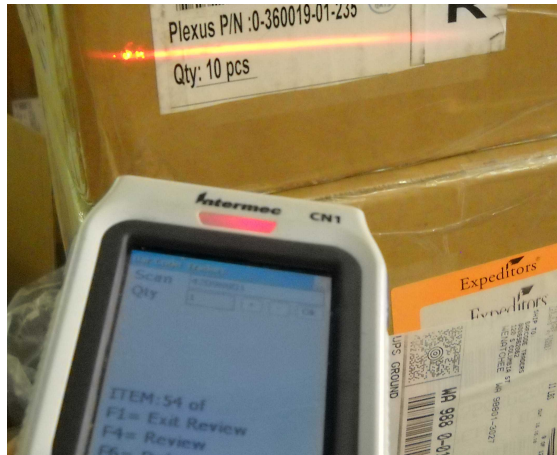


Power on/off

HOLD the yellow power button for 5 seconds to turn on/off!

Scan!

**Power on by tapping the SCREEN, or SCAN BUTTON!
Scan items in, you will see the scan items count increment.**

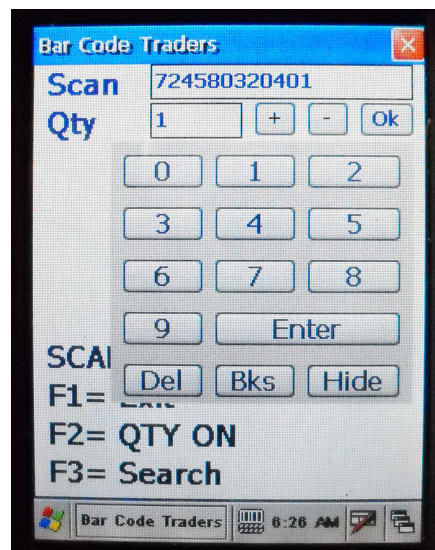


Qty Entry! (optional)

Use F2 button to TOGGLE entry mode

QTY OFF MODE: Items scanned in, value of qty 1 will be automatically inserted, and duplicates added together.

QTY ON MODE: A 10 key will pop up so you can enter values, as well as you can use the UP/DOWN arrow keys to increase.



Review Items/Delete Items

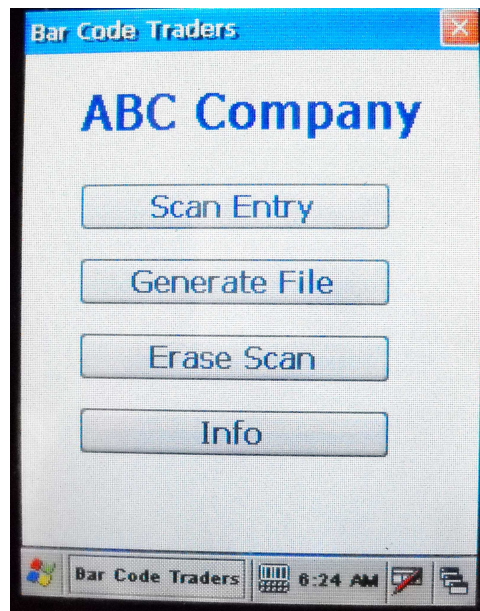
Use F4 button to enter REVIEW entry mode.
The UP/DOWN arrow keys scroll through your items, and use
the F6 key to delete any items not wanted.

When done, remember to hit F1 to EXIT review mode!

Generate File

Hit F1 to EXIT entry mode, it takes a few seconds to exit.

At the main menu, tap on Generate file, tap, OK!



Delete all scans

Tap on ERASE SCAN at the main menu, when you are done
with your scans. Most users WAIT until they are sure
generated scans are safe and secure on their PC, see below!

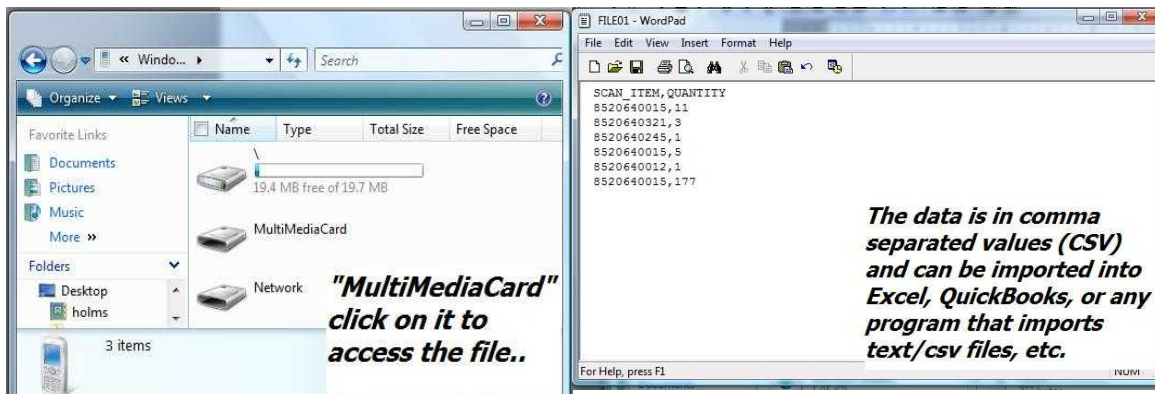
Open up scans file

Windows Vista, Windows 7 users:
Dock the computer in the dock, and wait for the PC to recognize it, you should see the windows CE show up under my computer, see pictures below..



Click on the Windows CE icon, it will connect you to the portable scanner, then click on the multimedia card on the scanner..

The click on the 01.CSV file. You can copy/paste it, or drag/drop, or open it, then save it to any location!



NOTE ABOUT FILES: You will see several files on the multimedia card, only click/open/drag/drop the .CSV file for your scans.

The file name is: 01.CSV, you should see a a file named 01.

NOTE! Sometimes users have multiple scanners, and we will setup a USER ID for EACH scanner. In this case the file name will be the USER ID, plus the 01.CSV.

Examples: User id of BOB Look for file name: BOB01
 User id of SCAN-A Look for a file name: SCAN-A01

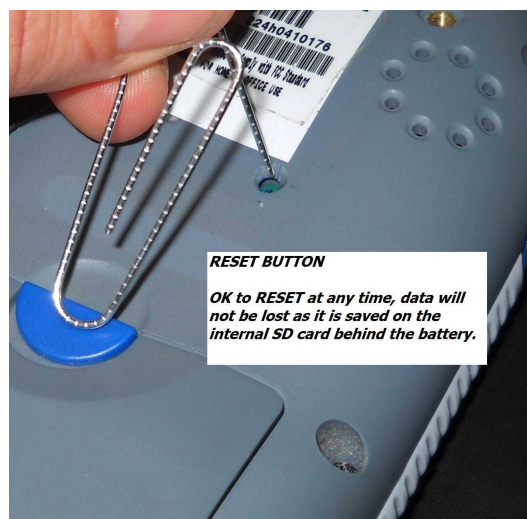
Review/Notes

1. The computer should always have a charge on the battery, if not, you can lose the automatic-run settings, but NOT the data or program. If you end up on a windows screen, or get lost, simply reset the computer, as shown below. If when you do the reset, it doesn't re-start the program, please contact us and we will send instructions on how to re-load the program from the internal SD data card, it is an easy process that takes 1 or two minutes, and can be done at any time.

2. Maintenance is not necessary for any of the components on the scanner, and it should perform for years without any problems. The battery is a lithium ion battery, the same as in many cell phones today, and can be replaced after a year for a small fee, also the warranty period is a year on the entire system including the battery. If you notice any decrease in battery life, or have any repair issues, contact us at any time!

Reset computer!

If you end up on a windows screen, or get lost, or the computer locks up, simply RESET it, by pushing paper clip in on the back, see image below. You WILL NOT lose your data.



Contact us at any time! service@barcodetraders.com